

## 2017-2018 Dubuque Symphony Youth Ensembles Audition Information

### String Ensemble

#### Violin

##### Scales

- Perform all scales listed for your instrument on the scale sheet

##### Excerpt

- Excerpts do not need to be memorized
- Prepare the excerpt in this packet to the best of your ability. Be sure to pay attention to the key signature, time signature, rhythms, slurs, strong tone, and artistic playing.
- If you are unfamiliar with the excerpt, you can consult with your private or school teacher. You can also listen to a recording or live performance of the piece in order to give yourself the proper style, tempo, and musical context.

##### Orchestra Placement

- The primary criterion for placement is the student's playing, which includes factors such as tone quality, technique, correct instrument position, musicality, and accuracy of pitch and rhythm.
- *Please note:* Spring 2017 auditions are used only to determine ensemble placement for the 2017-2018 season. Seating within the ensemble may change throughout the season.
- **Tuition Assistance:** The DSYE is committed to serving all students, and no student will be denied membership in the ensembles due to financial concerns. Any student requiring assistance is encouraged to learn more at: [www.dubuquesymphony.org/education-outreach/youth-ensembles](http://www.dubuquesymphony.org/education-outreach/youth-ensembles).

##### Orchestra Expectations

- Students are expected to practice their music in between rehearsals to a high artistic level.
- Students are expected to exhibit mature, respectful rehearsal behavior.

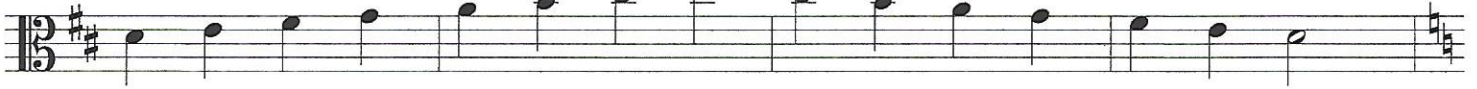
All questions, comments, and inquiries can be directed to:  
Madalyn Mackey, Education Programs Manager  
[mmackey@dubuquesymphony.org](mailto:mmackey@dubuquesymphony.org) | 563.557.1677 (w)

# STRING ENSEMBLE AUDITION SCALES

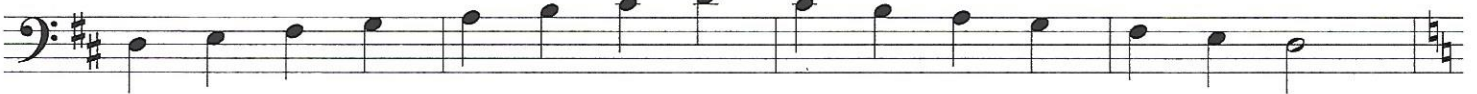
Violin



9 Viola



17 Cello



Bass



1/2

# Violin 1

## Estrellitas (Little Stars)

### for String Orchestra - Grade 2.5

STRING  
ENSEMBLE  
m. 1-40  
Allegro

LaFalco (Corkey) Robinson

*f marcato*

*p legato*

*poco ritardando* **A** *f legato* **Tempo I**

**Tempo I** *p*

*cresc.* *ff* *poco ritardando* **to Coda**  $\oplus$

**B** *f* *Meno mosso* (2 Soloists) *Play TOP*

**C** *tutti* *p* *cresc.*